

ARLO

TOWNHOMES

3418C 15TH AVE W

SEATTLE, WA 98119



1,390



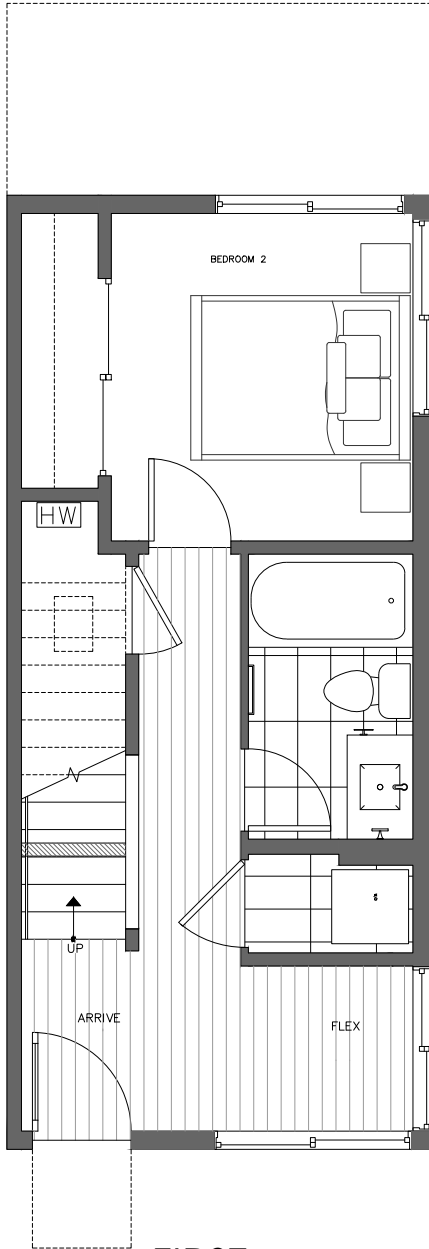
2



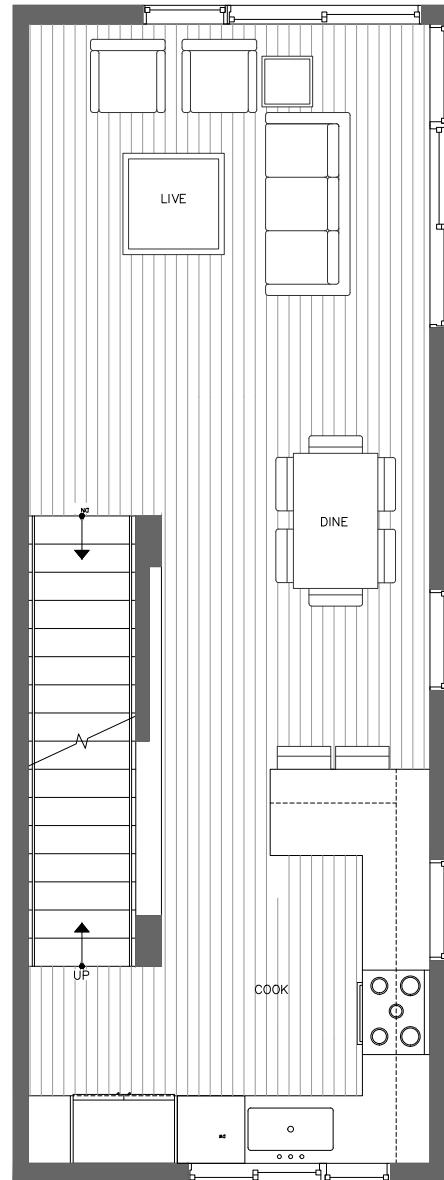
1.75



PARKING SPACE



FIRST FLOOR



SECOND FLOOR



PID: 348



1,390



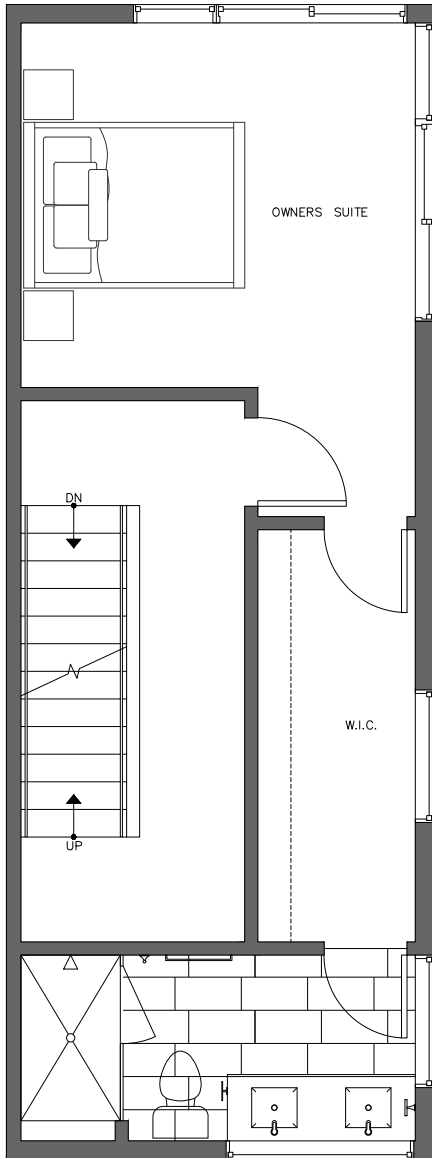
2



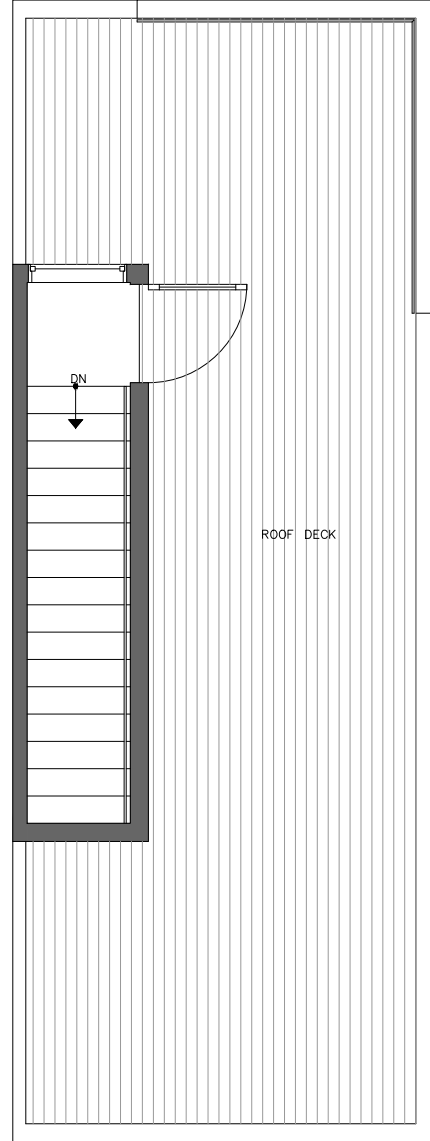
1.75



PARKING
SPACE



THIRD
FLOOR



ROOF
DECK



PID: 348