

ARLO

TOWNHOMES

3406C 15TH AVE W

SEATTLE, WA 98119



1,339



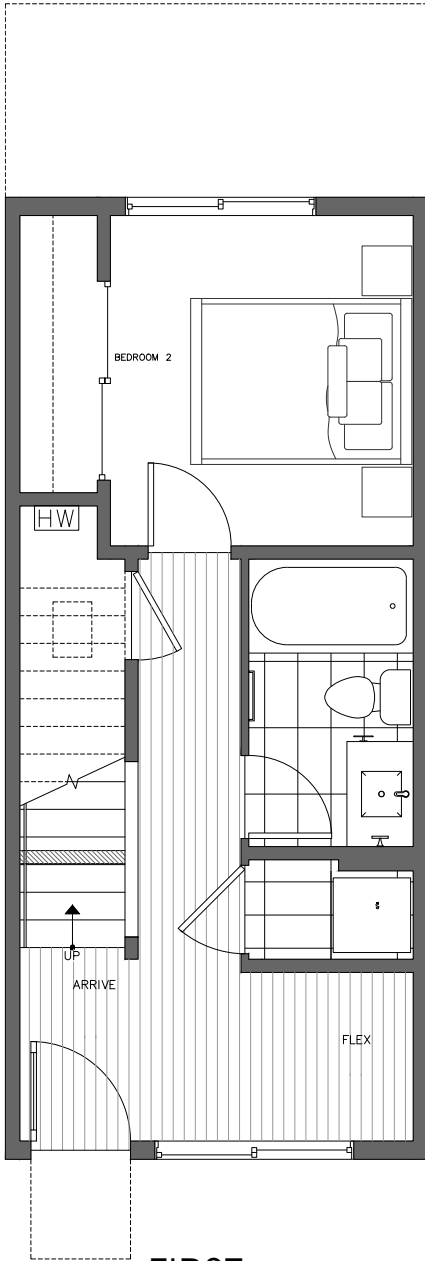
2



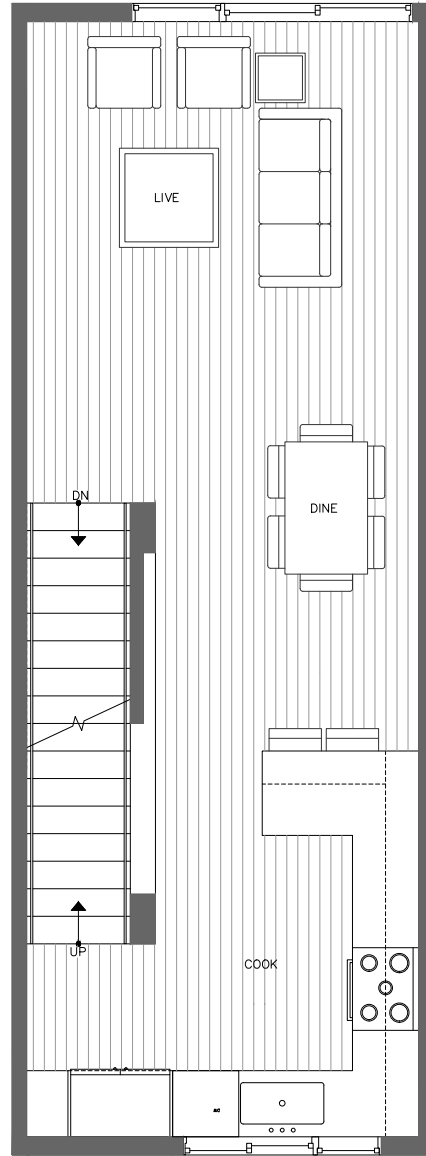
1.75



PARKING SPACE



FIRST FLOOR



SECOND FLOOR



PID: 348



1,339



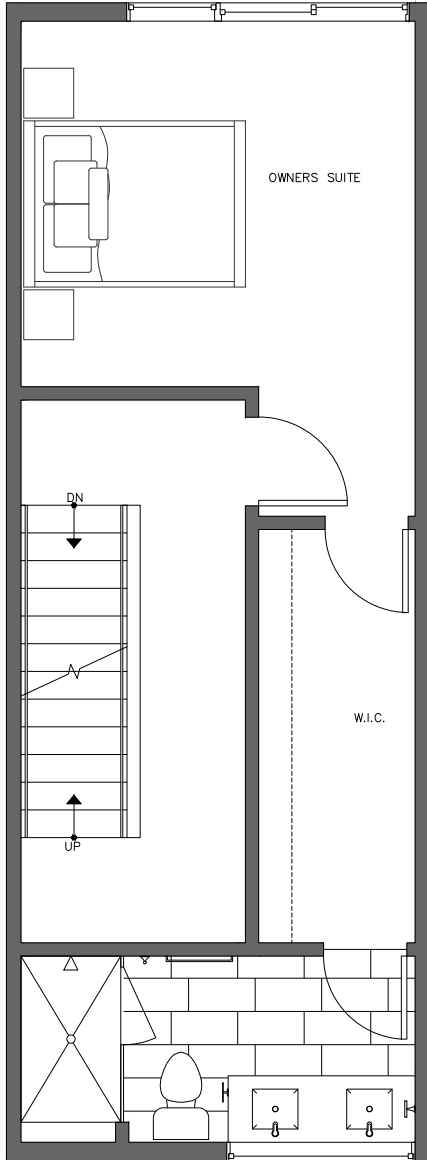
2



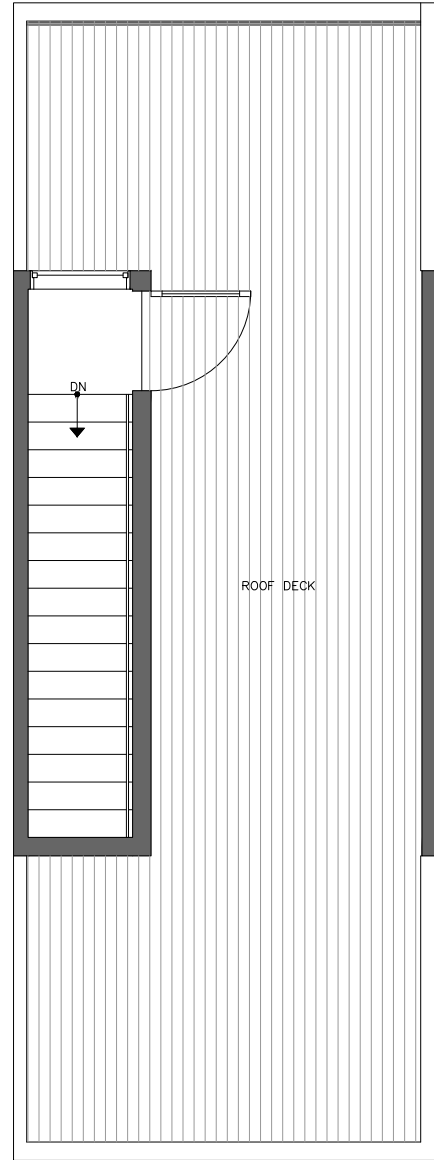
1.75



PARKING
SPACE



THIRD
FLOOR



ROOF
DECK



PID: 348